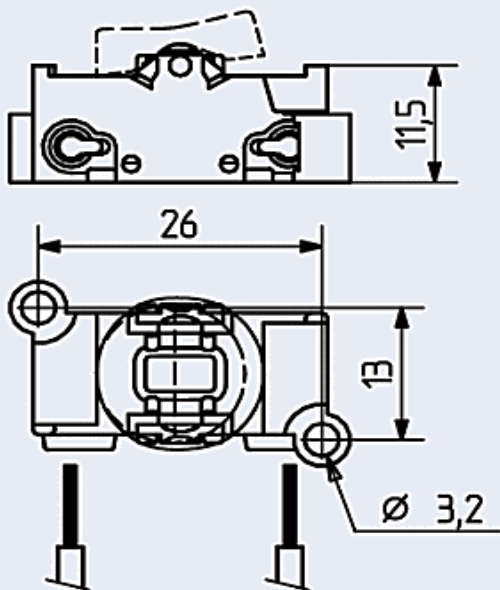


# Rocker switches

43.409 1 pole screw mounting



technology for light



Part no.  
**43.409.U315-0**

- Screw mounting
- Contacts: silver/silver
- Protected against electric shock after insertion of conductor. Additional cover not required



Connection data	
Connection technology	Push wire contact
Wire material	Copper
Solid wires	0.5 - 1 mm², AWG 20 - 18
Strip length 0.5 - 1.0 mm²	7 mm / 0.28 inch
Operating Cycles	10000

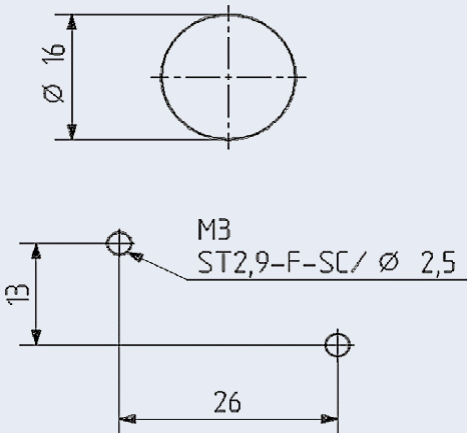
Electrical data		
	VDE / ENEC	cULus (E101848)
Ratings according to	EN IEC 61058-1 EN 61058-1-1	UL 61058
Rated voltage	250 V AC	
Rated current	6 (2) A, 6 [32] A	
Rated temperature	T 85/55	

Material data	
Material group	III a
Insulation material	Polycarbonate, white (housing) Polyamid, white (rocker)
Flammability class per UL94	V-2
Glow wire test	850°C
Contact material	CuSn alloy
Degree of protection	IP20

Packaging data	
Product weight	2.9 g
Packaging I	1000 pcs. in polybag
Bag weight	2.96 kg

## Cut-out dimensions for metal sheet

- Panel thickness: 0.5 - 1.0 mm



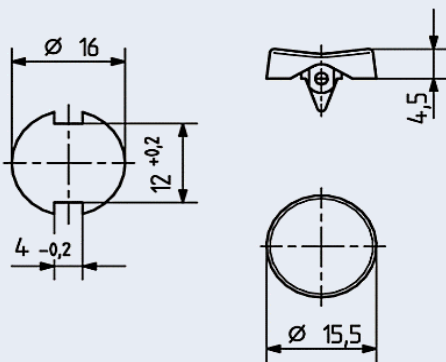
# Rocker switches

43.409 1 pole screw mounting



technology for light

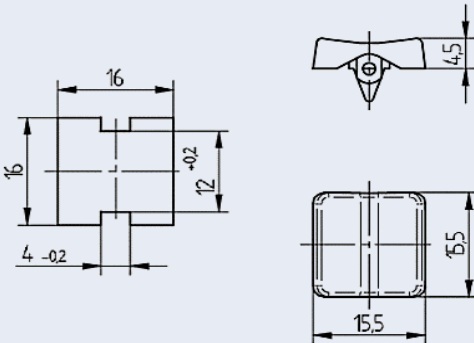
### Accessories



**Round rocker 43.409.E007-x**

Available in the colours

- white (-0)
- black (-4)
- silver grey RAL 9006 (-1)
- grey (-5)

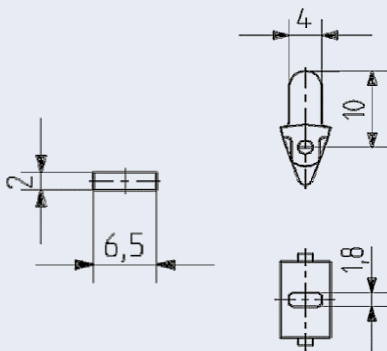


**Square rocker 43.409.E008-x**

Available in the colours

- white (-0)
- grey (-4)

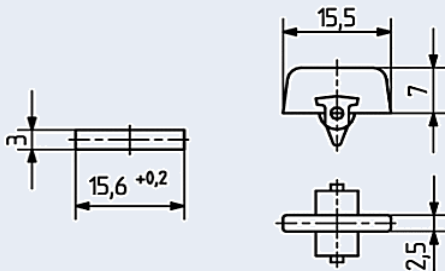
### Accessories



**Toggle switch 43.409.E009-0**

Available in the colours

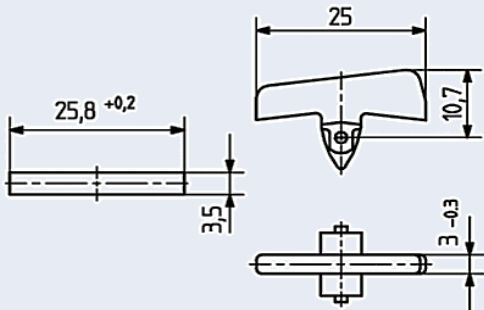
- white (-0)



**Ribbed rocker 15.5 mm 43.409.E010-x**

Available in the colours

- white (-0)
- black (-1)



**Ribbed rocker 25 mm 43.409.E314-x**

Available in the colours

- white (-0)
- black (-3)