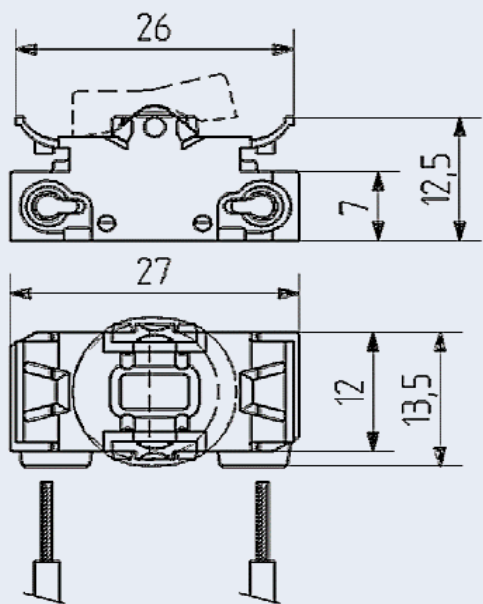


Rocker switches

43.409 1 pole snap in mounting

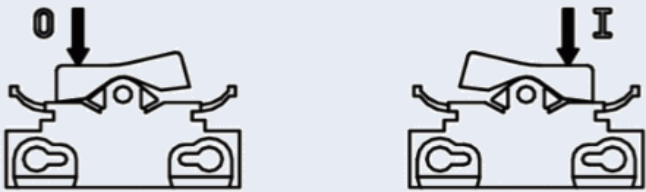


technology for light



Part no.
43.409.U314-0

- Snap in mounting
- Contacts: silver/silver
- Protected against electric shock after insertion of conductor. Additional cover not required



Connection data	
Connection technology	Push wire contact
Wire material	Copper
Solid wires	0.5 - 1 mm², AWG 20 - 18
Strip length 0.5 - 1.0 mm²	7 mm / 0.28 inch
Operating Cycles	10000

Electrical data		
	VDE / ENEC	cULus (E101848)
Ratings according to	EN IEC 61058-1 EN 61058-1-1	UL 61058
Rated voltage	250 V AC	
Rated current	6 (2) A, 6 [32] A	
Rated temperature	T 85/55	

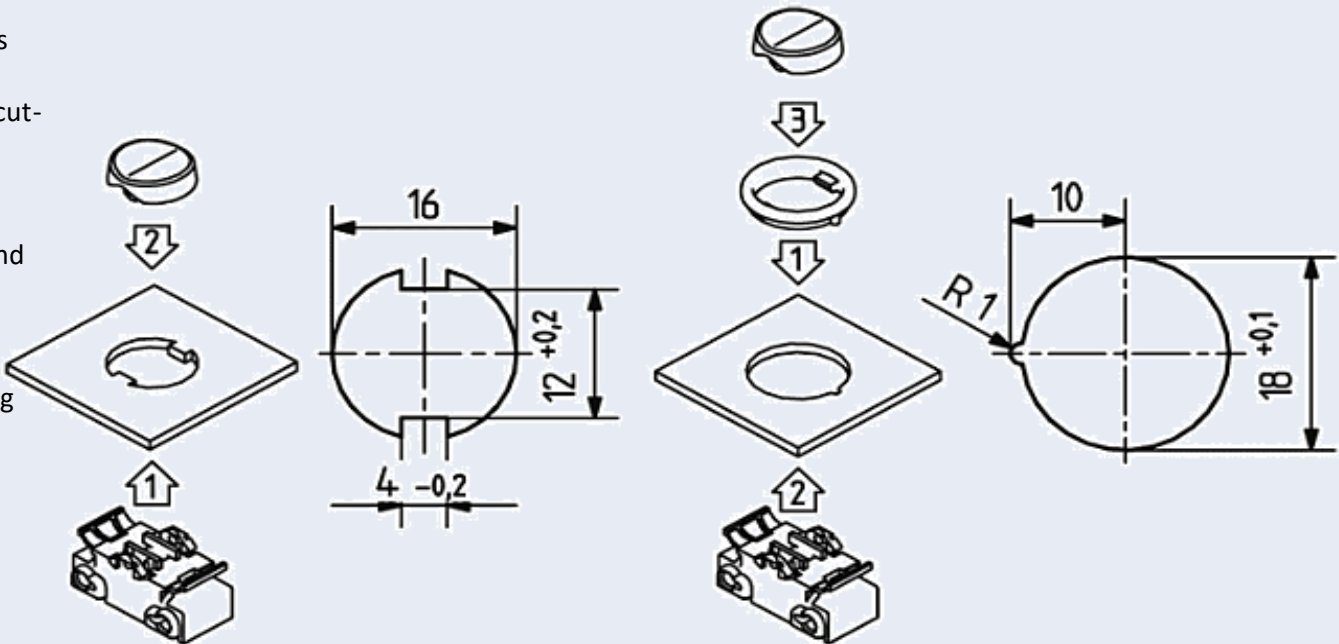
Material data	
Material group	IIIa
Insulation material	Polycarbonate, white (housing) Polyamid (rocker)
Flammability class per UL94	V-2
Glow wire test	850°C
Contact material	CuSn
Degree of protection	IP20

Packaging data	
Product weight	2.9 g
Packaging I	1000 pcs. in polybag
Bag weight	2.92 kg

Example of application: Snap in mounting

1. Direct snap-in mounting
- Can be snapped into plastic or metal panels
 - Suitable panel thickness: 0.5 – 1.0 mm
 - The switch housing snaps directly into the cut-out
 - The rocker is then snapped in

2. Snap-in mounting with bezel ring (for round rockers)
- The bezel ring is positioned in the cut-out
 - Suitable panel thickness: 0.8 – 1.3 mm
 - The switch housing snaps into the bezel ring
 - The rocker is then snapped in



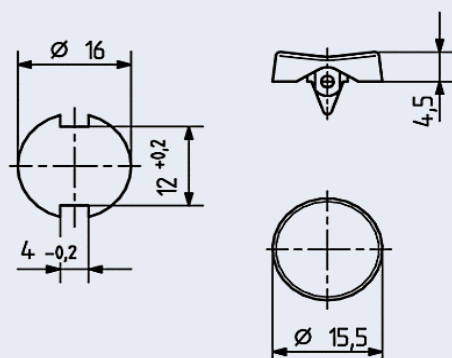
Rocker switches

43.409 1 pole snap in mounting



technology for light

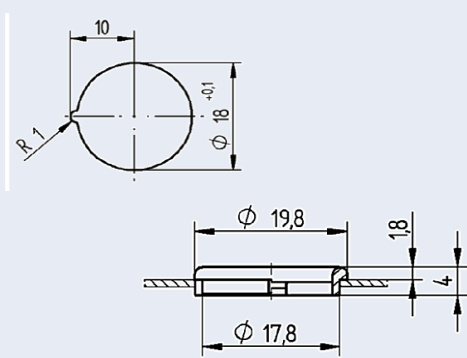
Accessories



Round rocker 43.409.E007-x

Available in the colours

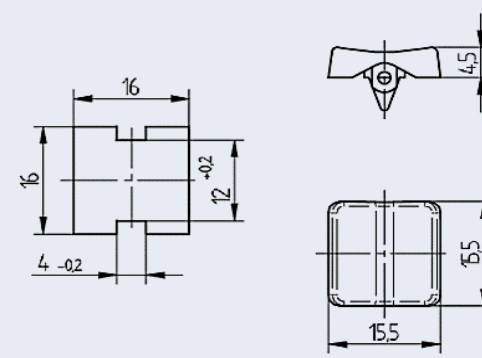
- white (-0)
- black (-4)
- silver grey RAL 9006 (-1)
- grey (-5)



Bezel 43.409.E018-x

Available in the colours

- white (-0)
- black (-3)
- grey (-4)

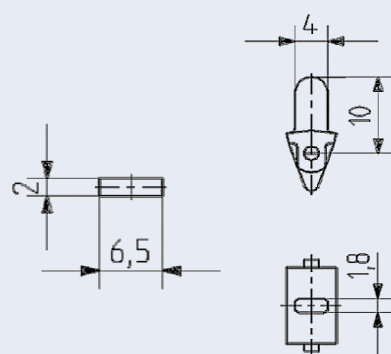


Square rocker 43.409.E008-x

Available in the colours

- white (-0)
- grey (-4)

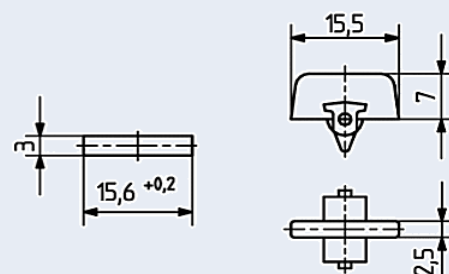
Accessories



Toggle switch 43.409.E009-0

Available in the colours

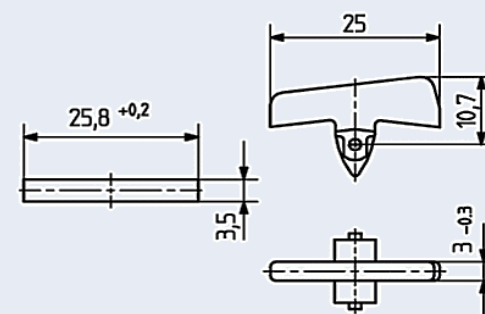
- white (-0)



Ribbed rocker 15.5 mm 43.409.E010-x

Available in the colours

- white (-0)
- black (-1)



Ribbed rocker 25 mm 43.409.E314-x

Available in the colours

- white (-0)
- black (-3)

Further application example

Location on pins
Slide the product onto two pins (Ø 2 mm holes located underneath the housing). Fixation with screws is not permitted.

Standard build-in situation

